



GRAPHIC SCALE: 1 Inch = 20 Feet

UNIT NUMBER:

WEST UNIT

EAST UNIT

LIMITED COMMON ELEMENT



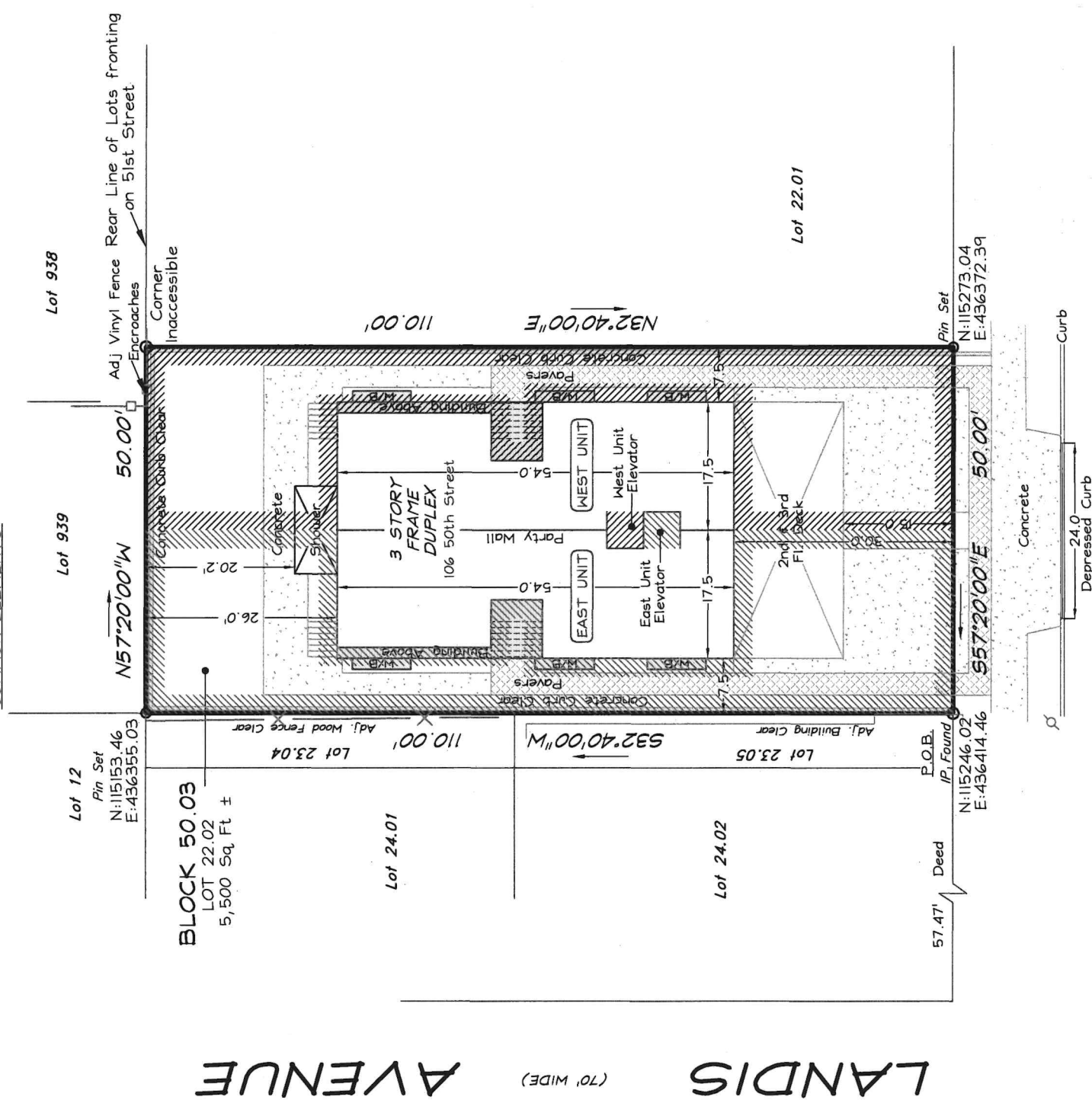
PERCENTAGE INTEREST IN COMMON ELEMENTS:

50%

50%



Adj. DEED



50th STREET (60' WIDE)

REFERENCE:

-DEED BOOK 4210, PG 40

GENERAL NOTES:

- SERVICED BY UNDERGROUND UTILITIES
- THIS SITE CONTAINS 5,500 Sq. Ft.
- COORDINATE VALUES ARE IN FEET AND ARE BASED ON A NAD 83 N.J. STATE PLANE COORDINATE.
- CAPE LAND SURVEYING, LLC RESERVES THE RIGHT TO AMEND THIS SURVEY UPON RECEIPT OF A CURRENT, ACCURATE TITLE REPORT.

I HEREBY CERTIFY THAT THIS PLAN CONSTITUTES A CORRECT REPRESENTATION OF THE IMPROVEMENTS ERECTED HEREON WITHIN THE REQUIREMENTS OF THE "CONDOMINIUM SECTION" OF N.J.A.C. 46:23-9.19 "THE MAP FILING LAW"

THE ORIGINAL OF THIS DRAWING IS THE PROPERTY OF CAPE LAND SURVEYING L.L.C.

ONLY COPIES FROM THE ORIGINAL MAP OF THIS PLAN, CLEARLY MARKED WITH THE LAND SURVEYOR'S EMBOSSED SEAL OR DIGITAL SEAL WITH A VERIFIED SIGNATURE CERTIFICATE AND TIME STAMP SHALL BE CONSIDERED TO BE VALID.

106 50th STREET
CONDOMINIUM ASSOCIATION

SCALE:
1" = 20'

DATE:
10-07-25

DRAWN BY:
FJS

PROJ NO:
16696-B

CONDOMINIUM SURVEY

SITUATE IN

BLOCK 50.03
LOT 22.02
CITY OF SEA ISLE CITY
CAPE MAY COUNTY, NJ

CAPE LAND SURVEYING L.L.C.

PROFESSIONAL LAND SURVEYING
CERTIFICATE OF AUTHORIZATION NUMBER 24G28136700
PHONE:(609) 390-9618 EMAIL:OFFICE@CAPESURVEY.COM
1217 S. SHORE ROAD SUITE 106
OCEAN VIEW, NEW JERSEY 08230

George Swensen

GEORGE SWENSEN
PROFESSIONAL LAND SURVEYOR
N.J. LICENSE GS43415